

# Application Note

July 1, 2009

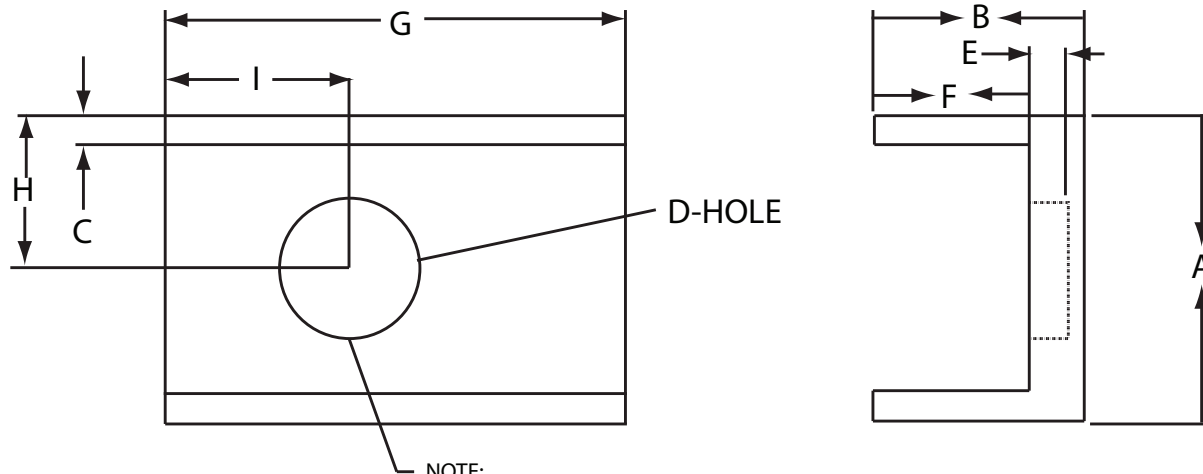
Document No: AN009-0001, Ver 1.01

PDF Name: BMP\_Removal\_Tool



LINEAGE POWER

## Board Mounted Product Removal Tool



**NOTE:**

1. PLACE ADHESIVE IN HOLE AND THEN MAGNETIC FOR PERMANENT PLACEMENT TO TOOL. ADHESIVE MUST BE BELOW MAGNET

2. CURE THE ASSEMBLY FOR 30 MINUTES AT 150 DEG. C.

Products	----- Tool Dimensions -----									
	A	B	C	D	E	F	G	H	I	
<b>HW004/5/6/010</b>	1.250	0.500	0.040	0.290	0.105	0.240	2.000	0.550	0.460	
<b>Austin Lite</b>	0.625	0.500	0.030	0.290	0.105	0.140	1.400	0.312	0.270	
<b>KW006 / 010 / 015 / 020 / 025</b>	1.400	0.500	0.030	0.290	0.030	0.250	1.000	0.750	0.400	
<b>SC/SW001/003</b>	1.250	0.500	0.050	0.290	0.105	0.220	1.000	0.550	0.320	
<b>Mini Lynx (AXA/AXH003)</b>	0.625	0.500	0.080	0.290	0.105	0.220	1.000	0.250	0.500	
<b>Micro Lynx (AXA/AXH005)</b>	0.625	0.500	0.080	0.290	0.105	0.220	1.000	0.312	0.500	
<b>Micro Lynx 2 (ATA/ATH006)</b>	0.625	0.500	0.080	0.290	0.105	0.220	1.200	0.312	0.550	
<b>Mega Lynx (ATH/ATM/ATS030)</b>	0.625	0.500	0.030	0.290	0.105	0.260	1.400	0.312	0.500	
<b>Super Lynx (AXA/AXH016)</b>	0.625	0.500	0.030	0.290	0.105	0.260	1.400	0.312	0.500	
<b>Super Lynx 2 (ATA/ATH016/ATM020)</b>	0.625	0.500	0.030	0.290	0.105	0.260	1.400	0.312	0.500	
<b>Lynx (AXA/AXH010)</b>	0.625	0.500	0.030	0.290	0.105	0.260	1.400	0.312	0.500	
<b>Lynx 2 (ATA/ATH010)</b>	0.625	0.500	0.030	0.290	0.105	0.260	1.400	0.312	0.500	
<b>Pico Lynx (APTS/APTH003/ APXS/APXH003)</b>	0.500	0.475	0.030	0.290	0.105	0.175	0.500	0.250	0.250	
<b>Pico Lynx (APTS/APTH006/ APXS/APXH006)</b>	0.500	0.475	0.030	0.290	0.105	0.215	0.500	0.250	0.250	
<b>Micro TLynx (APTS/APTH012/ APXH012)</b>	0.500	0.475	0.030	0.290	0.105	0.255	0.850	0.250	0.425	
<b>Super TLynx (APTS/APTH020)</b>	0.500	0.475	0.030	0.290	0.105	0.255	1.400	0.250	0.500	

External Parts required to assemble the removal tool:

ITEM	QTY PER	IDENT NO.	DESCRIPTION
1	1	5768K26	MAGNETIC DISC TYPE 2-17 OBTAINED FROM McMASTER-CARR
2	1	ANE 26144-BC-0000-005	ADHESIVE EPOXY OBTAINED FROM PROTAVIC AMERICA 1800-807-2294

# Application Note

July 1, 2009

Document No: AN009-0001, Ver 1.01

PDF Name: BMP\_Removal\_Tool



## Board Mounted Product Removal Tool

Products	----- Tool Dimensions -----								
	A	B	C	D	E	F	G	H	I
<b>HW004/5/6/010</b>	1.250	0.500	0.040	0.290	0.105	0.240	2.000	0.550	0.460
<b>Austin Life</b>	0.625	0.500	0.030	0.290	0.105	0.140	1.400	0.312	0.270
<b>KW006 / 010 / 015 / 020 / 025</b>	1.400	0.500	0.030	0.290	0.030	0.250	1.000	0.750	0.400
<b>SC/SW001/003</b>	1.250	0.500	0.050	0.290	0.105	0.220	1.000	0.550	0.320
<b>Mini Lynx (AXA/AXH003)</b>	0.625	0.500	0.080	0.290	0.105	0.220	1.000	0.250	0.500
<b>Micro Lynx (AXA/AXH005)</b>	0.625	0.500	0.080	0.290	0.105	0.220	1.000	0.312	0.500
<b>Micro Lynx 2 (ATA/ATH006)</b>	0.625	0.500	0.080	0.290	0.105	0.220	1.200	0.312	0.550
<b>Mega Lynx (ATH/ATM/ATS030)</b>	0.625	0.500	0.030	0.290	0.105	0.260	1.400	0.312	0.500
<b>Super Lynx (AXA/AXH016)</b>	0.625	0.500	0.030	0.290	0.105	0.260	1.400	0.312	0.500
<b>Super Lynx 2 (ATA/ATH016/ATM020)</b>	0.625	0.500	0.030	0.290	0.105	0.260	1.400	0.312	0.500
<b>Lynx (AXA/AXH010)</b>	0.625	0.500	0.030	0.290	0.105	0.260	1.400	0.312	0.500
<b>Lynx 2 (ATA/ATH010)</b>	0.625	0.500	0.030	0.290	0.105	0.260	1.400	0.312	0.500
<b>Pico Lynx (APTS/APTH003/ APXS/APXH003)</b>	0.500	0.475	0.030	0.290	0.105	0.175	0.500	0.250	0.250
<b>Pico Lynx (APTS/APTH006/ APXS/APXH006)</b>	0.500	0.475	0.030	0.290	0.105	0.215	0.500	0.250	0.250
<b>Micro TLynx (APTS/APTH012/ APXH012)</b>	0.500	0.475	0.030	0.290	0.105	0.255	0.850	0.250	0.425
<b>Super TLynx (APTS/APTH020)</b>	0.500	0.475	0.030	0.290	0.105	0.255	1.400	0.250	0.500